

Unit 3

GOALS

Terms: Note
Scale: C Major Scale
Rhythms: Quarter notes Eighth notes in pairs
Solfeggio: DO RE MI FA SOL
Piano: The five-finger pattern

Concepts & Terms

Review – what is a note? How is it different from pitch or tone? Refer back to Unit 1 if you're not sure.

First Scale – C Major Scale

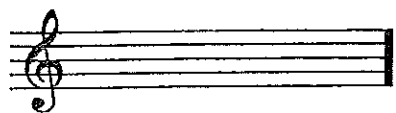
We will be using a system called “Moveable DO” throughout the course of these books. That simply means that we can name any pitch as DO in a piece of music. The rest of the scale will proceed from that starting pitch. Up to this point, we have just been picking DO out of our comfortable range. Now, we will begin to assign different pitches to be DO. We'll change the pitch each week.

How do we find DO?

We can find DO, the starting point of any scale, by using a **key signature**. A **key signature** is a set of symbols, called **accidentals**, which tells us the location of DO.

The first key signature is an easy one to spot. That's because it has nothing in it. In every other key, you will find a set of accidentals right after the clef on the staff. But in this one, you will find only blank space.

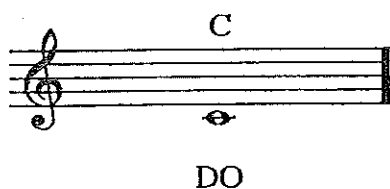
Here's what it looks like.



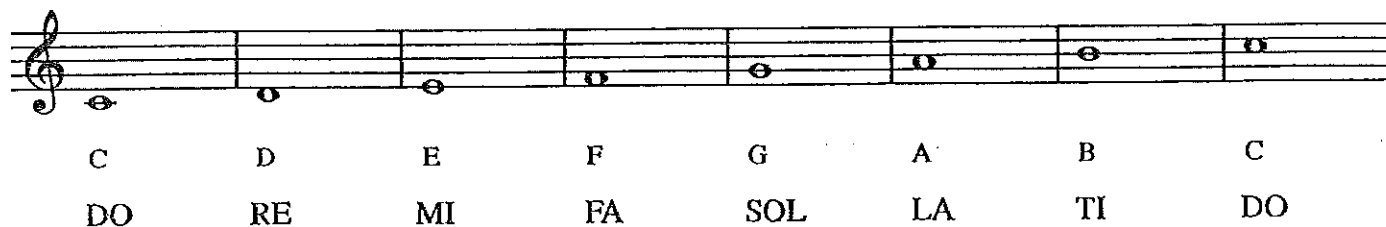
Notice that there is nothing to the right of the clef.

THIS IS OUR FIRST KEY - THE KEY OF C MAJOR

That means that DO is C.



We can then create the rest of the scale by just going forward through the alphabet, stopping when we get to the next C.



Sing this scale twice. The first time, sing this on the solfeggio syllables. The second time, sing it on the letter names.

Solfeggio.

Now it's time to put our solfeggio exercises on the staff.

It is very important to do two things: GO SLOWLY, and KEEP THE BEAT STEADY

Sing the following exercises on the solfeggio syllables.

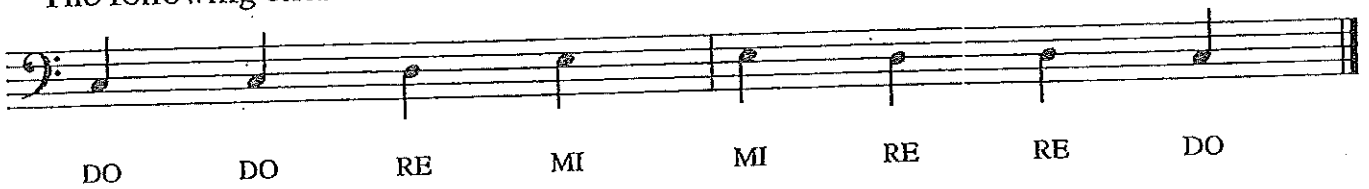


DO DO RE RE MI MI RE DO

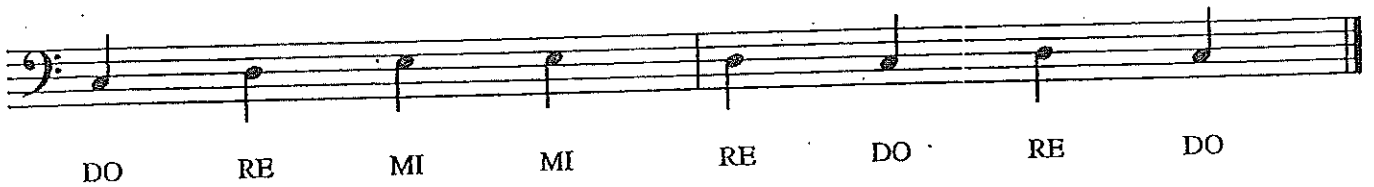


DO RE MI MI RE MI RE DO

The following exercises are in the Bass Clef. We are still in the key of C Major.



DO DO RE MI MI RE RE DO



DO RE MI MI RE DO RE DO

Let's make the exercises a little longer, and include FA and SOL as well.



DO RE MI MI FA FA SOL SOL FA MI RE DO



DO DO RE MI RE MI FA MI MI FA SOL SOL

Piano – The Five-Finger Pattern

For the remainder of this book, we will be working on something called the “five-finger” pattern. This is a great exercise for both learning the piano keyboard and coordinating the muscles in your hands. At first, this may seem very difficult. STAY WITH IT! It will get easier with practice.

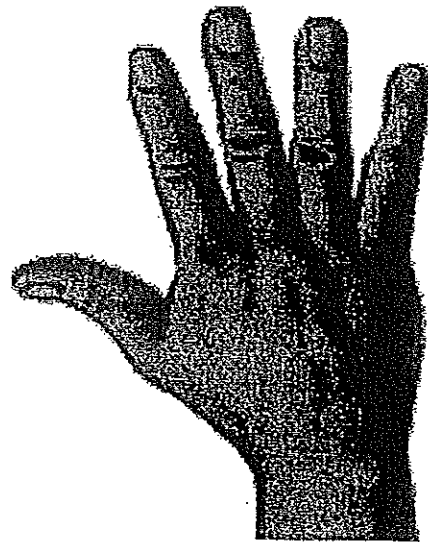
Keyboard Fingering

The fingers of each hand are numbered, from 1 to 5, starting with the thumb and moving outwards towards the pinkie.

5 4 3 2 1 1 2 3 4 5



Left hand (LH)



Right Hand (RH)

The left hand mostly plays the Bass Clef, while the right hand mostly plays the Treble Clef. Later, we will work on playing with both hands at the same time, but for now, we’ll work on one at a time.

C Major – Five-Finger Pattern

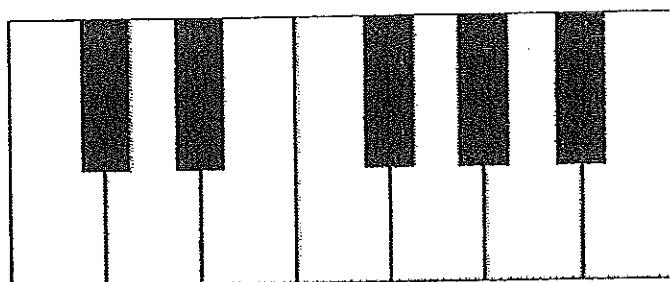
Start with the right hand, putting your thumb (#1) on the C.

From there, work your way up, putting the next finger on the next white key.

Finger placement – Right hand

Thumb	#1	C
Index	#2	D
Middle	#3	E
Ring	#4	F
Pinkie	#5	G

Curve your fingers slightly and keep your wrist straight. You want your hand to be in as normal and comfortable a position as possible. During the exercise, **keep your fingers on the keys**. Don't allow them to fly up when another finger presses a key – this is easier said than done at the beginning!



Play.

Keep the beat slow and steady – quarter notes.

C	D	E	F	G	F	E	D	C
1	2	3	4	5	4	3	2	1

Finger placement – Left hand

Pinkie	#5	C
Ring	#4	D
Middle	#3	E
Index	#2	F
Thumb	#1	G

Again, during the exercise, **keep your fingers on the keys.** Don't allow them to fly up when another finger presses a key. If you're right-handed, this will be quite difficult.



Worksheet #3

This is the key of C Major. Write the notes above the correct letters or syllables.

DO RE MI FA SOL LA TI DO

C D E F G A B C

Write the solfeggio syllables under the notes in the key of C Major.

Write the counts below each rhythm.

Write the correct rhythm on the staff above the counts.

1 2 and 3 4 and 1 and 2 3 and 4 1 and 2 3 4

1 2 and 3 and 4 1 and 2 and 3 and 4 1 2 3 4 and



Lesson #3

Define NOTE. How is it different from Tone or Pitch?

This is the Key of C Major. Sing the Scale on the NOTE NAMES, in both directions.



Your tutor will clap ONE of these rhythms, one measure at a time.

First, figure out which rhythm, then echo the rhythms while looking at the notation.

Count out loud. **TUTOR: Do 3 examples total.**



#1

#2

#3



#4

#5

#6

Sing the following using Solfeggio syllables. Keep a steady beat.

DO NOT write the syllables in ahead of time.



DO

Play the Five-Finger Pattern in the key of C Major. Keep a steady beat.

Play each hand separately.



RH:1

2

3

4

5

4

3

2

1



LH:5

4

3

2

1

2

3

4

5

Lesson #3

Tutor Rubric

TERMS

- Excellent Student gives correct definition without aid.
Acceptable Student gives correct definition, but needs some prompting.
Do Again Student cannot give correct definition.

SCALE

- Excellent Scale sung correctly. In tune. No assistance.
Acceptable Scale sung correctly. Some intonation problems. Some assistance.
Do Again Scale sung with incorrect pitches or letters.

ECHO CLAPPING

- Excellent Rhythms identified and performed correctly. Steady beat.
Acceptable Rhythms identified and performed correctly. Some hesitation.
Do Again Rhythms identified or performed incorrectly.

MELODY

- Excellent Melody sung correctly. In tune. Steady beat.
Acceptable Melody sung correctly. Some intonation problems. Some hesitation.
Do Again Melody sung incorrectly or too many hesitations.

PIANO KEYBOARD

- Excellent Pitches played correctly with correct fingering.
Acceptable Pitches played correctly. Fingering needs assistance.
Do Again Pitches played incorrectly.

Tutor's Signature _____ Date _____

Sight-Reading #1

Sing the following exercises using Solfeggio syllables.

Keep a steady beat.

Instructor: Choose one at random for each student.



#1



#2



#3



#4

Rubric - 12 points

Pitches - 4 points

1 point for each measure of correct pitches

TOTAL: _____

Steady Beat - 4 points

1 point for each measure where beat is kept steady

TOTAL: _____

Solfeggio - 4 points

1 point for each measure of correct solfeggio syllables

TOTAL: _____

